

IHPME CONNECT 02.2016

FROM ENGAGED STUDENTS TO COLLABORATIVE
HEALTH LEADERS

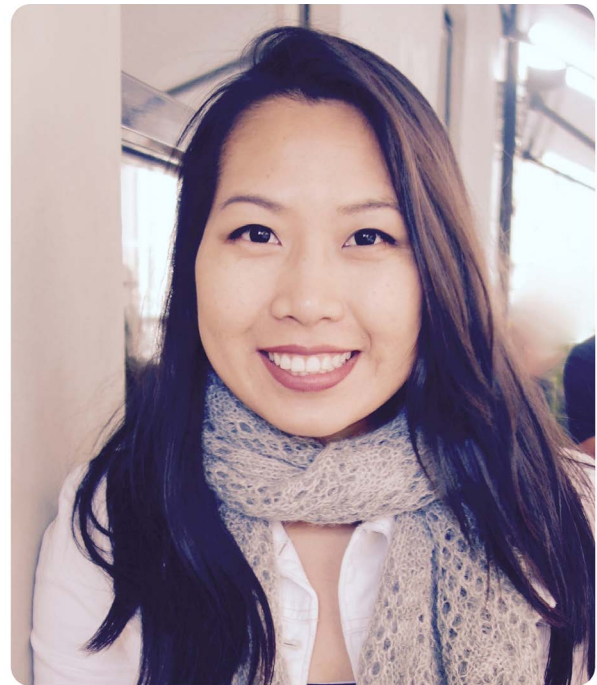
THERESA LEE: BUILDING BRIDGES AT IHPME

“Breaking down silos” is a popular phrase, and worthy goal, in health care administration. However, rather than “breaking down” wouldn’t it be even more beneficial if they never went up?– at least in the minds of the future health care leaders graduating from IHPME.

Theresa Lee, the current President of the Graduate Student Union (GSU) considers building relationships across disciplines as one of the most important goals for the organization. “Sometimes the silos of the health system can be mirrored here at the Institute. It can be hard to meet people from different cohorts and from outside your own course of study,” says Theresa. “For me, GSU has been an excellent way to meet students in different research areas. I think partnerships are especially important in our field and IHPME is great for building connections.”

A second year PhD Student in Health Services Research, in the Health Informatics Research stream, Theresa’s own research strives to make meaningful use of Electronic Medical Records (EMR) in primary care settings, by figuring out ways of using EMR data to see how family doctors across the province are practicing medicine, with a particular focus on cardiovascular disease and COPD management. “I came to IHPME because of the innovative work of our professors, the academic rigour and great reputation of our school, as well as the Institutes’ numerous and deep connections to organizations that excel in applied health service research and health care policy.”

Theresa points to GSU activities such as Lunch & Learns as an opportunity for students from across cohorts and disciplines to interact. The scheduling over lunch is a deliberate decision to



accommodate the busy schedules of students in both research and professional degree programs. The GSU also makes the effort to schedule engaging speakers who can present on topics that would interest all types of students, including those currently in research, private practice sectors or public policy positions. For example, in January, the GSU welcomed Associate Minister of Health and Long-Term Care Dipika Damerla for a lunch and learn session.

“Having been in a professional degree program and research degree program, you figure out that they are both very demanding in different ways,” says Theresa. “The GSU has allowed me to connect with students, future colleagues, and professionals alike, which is why I am hoping to give back with my involvement this year.”

The GSU is also working to grow the engagement between the student community and senior fellows at IHPME. “We’ve begun holding evening sessions in a relaxed environment. It’s an opportunity for students to engage with the senior fellows and learn from their experience in the health system,” says Theresa.

In addition to all of the professional benefits, Theresa points out that it’s also about personal fulfilment and wellbeing. “GSU is providing opportunities for students to take a breather, de-stress and spend time with colleagues who know the daily struggle and ‘ins and outs’ of being a student.” In doing so, she sees the opportunity to contribute to a stronger IHPME in the future. “The GSU is really about building that bridge between being a student and remaining engaged with each other in our professional lives. The more we can do to make people feel connected while they are students, the more likely they will be to stay involved in the IHPME community as alumni.”

There are a number of ways to get involved with IHPME’s GSU. For more information, email gsu.hpme@utoronto.ca

STUDENTS AT WORK

Toronto East General Hospital (TEGH) recently recognized the outstanding contributions of IHPME students. “We truly value working with Health Administration students – they bring new and leading edge information to our discussions, challenge our thinking about critical topics, and bring fresh ideas from their own past experiences,” reports Sarah Downey, CEO at TEGH. The hospital has long been a regular placement site for IHPME MHS Sc Health Administration students. Downey and Wolf Klassen, VP Program Support at TEGH, follow a paired preceptor model in which students have full access to their meeting calendars and join them in a wide range of external and internal meetings in addition to engaging in projects focused on their specific learning objectives.

TEGH offers a robust student placement program through preset meetings with senior team members and directors across the hospital, and arranges off-site visits to organizations of interest to the student, such as community care organizations, rural hospitals, the OMA and EMS. “Students bring value to TEGH. Over the years, they have contributed to developing business plans and proposals for new or expanded services for submission to the Ministry, documenting leading practices for accreditation, leading quality and patient safety initiatives, strategic planning work, and developing plans related to IT or human resources – all initiatives that align with the important work of the time at TEGH,” reports Klassen. “In addition, we have hired a number of graduates and try to stay connected after students leave – there is quite an alumni group.”

Tina Smith, Health Administration Program Director, adds that “students completing their placements at TEGH have remarked on the breadth of their experiences and the mentorship by senior leadership. We are very fortunate to have TEGH and other organizations providing excellent opportunities for our students.”

In 2015, a total of 34 students graduated from the MHS Sc Health Administration program. All of the students completed a practicum placement or major project as part of the program. We would like to thank the very committed preceptors and the 27 organizations for providing our students with outstanding placement experiences.

Organizations that provided student practicum placements for the class of 2015 include: Agnew Peckham, Bridgepoint Health, Cancer Care Ontario, the Centre for Addiction and Mental Health, Four Villages Community Health Centre, Hamilton Niagara Haldimand Brant LHIN, Health Quality Ontario, Kingston General Hospital, MaRS Discovery District, Ministry of Health and Long-Term Care, Mississauga Halton LHIN, Mount Sinai Hospital, North York General Hospital,

Ontario College of Pharmacists, Ontario Hospital Association, Rouge Valley Health System, Saint Elizabeth, St. Joseph’s Health Centre, Sunnybrook Health Sciences Centre, The Change Foundation, The Ottawa Hospital, Toronto Central CCAC, Toronto Central LHIN, Toronto East General Hospital, Trillium Health Partners, William Osler Health System and Women’s College Hospital.

IHPME’S NEW EXECUTIVE MHI PROGRAM

In response to rising demand from the healthcare industry, the Masters of Health Informatics (MHI) program is offering a new executive stream, which is set to launch this summer. University of Toronto School of Graduate Studies approved a six semester modular format option of the MHI program that enables students to sustain career momentum while gaining the specialized knowledge of the degree.

“Health informatics is increasingly demanding the critical and analytic skills of those in engaged in leadership. The executive MHI opens the doors for working professionals to add to their knowledge and abilities while staying engaged in the rapidly evolving health IT landscape,” says Wei Qiu, MD, Chief Medical Informatics Officer, eHealth Ontario. Dr. Qiu and a host of other health leaders, many who have graduated from the regular program that was established in 2007, have acted as advisors during the building process of the new Executive MHI.

“The level of specialization and credentials offered by the MHI executive stream gives working health informatics professionals a competitive edge in our field. We’ve hired out of MHI and hosted practicum students – and we’re confident we’ll see another new wave of high-caliber professionals emerge with this option,” explains Aaron Berk, Partner, KPMG Canada, advisor to EMHI and 2005 graduate of the IHPME MHS Sc program.

The established MHI program – which is currently delivered over four semesters and includes a four month practicum – is designed for individuals entering the field or in mid-career stages. The new executive option accommodates individuals who are already established in healthcare and health informatics-related roles, and who require a relevant graduate credential to move forward in their careers. The Executive MHI is accepting applications now.

For more information,
contact MHI Program Director Julia.Zarb@utoronto.ca
or visit the [MHI section of IHPME.utoronto.ca](http://MHI.section.of.IHPME.utoronto.ca)

CALL FOR PRACTICUM PLACEMENTS

HOST AN MHI STUDENT



Help your organization and support health informatics' next leaders. Master of Health Informatics (MHI) students bring knowledge, skill and energy to your team. Contact us now to host a 16 week practicum placement starting in May.

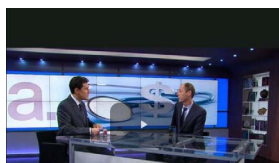
For more information about the MHI practicum program email Twylla Bird-Gayson at t.bird.gayson@utoronto.ca

IHPME IN THE NEWS

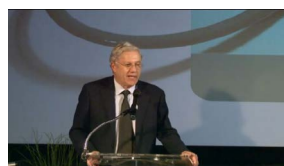
IHPME Professor [Walter Wodchis](#) CMAJ paper was recently profiled by [CTV News](#), [U of T News](#) and other media outlets. Notably, Wodchis also appeared on TVO's *The Agenda* with [Steve Paikin](#).

In light of the recent summit among Canadian health ministers, IHPME Professor [Raisa Deber](#) spoke with CBC Radio about current health care issues and key points of consideration.

WORTH WATCHING



High-Care High-Cost Patients
IHPME Professor Walter Wodchis recently appeared on TVO's *The Agenda* with [Steve Paikin](#). [Watch the video.](#)



Why I Went to Seattle
IHPME Professor [Allan Detsky](#) was a featured storyteller on *Annals of Internal Medicine's On Being a Doctor* series. [Watch the video.](#)



Does Canada Need a New National Policy for Senior Care? IHPME Professor [Samir Sinha's](#) recent talk was featured on [HealthPolicy.tv](#). [Watch the video.](#)

PUBLICATIONS

Bierman AS, [Brown AD](#), Levinton CM
International Journal for Equity and Health
[Using decision trees for measuring gender equity in the timing of angiography in patients with acute coronary syndrome: a novel approach to equity analysis](#)

[Fowler R et al.](#)
JAMA
[Comparison of Site of Death, Health Care Utilization, and Hospital Expenditures for Patients Dying With Cancer in 7 Developed Countries](#)

Crampton NH, Reis S, [Shachak A](#)
Journal of the American Medical Informatics Association
[Computers in the clinical encounter: a scoping review and thematic analysis](#)

Wodchis WA, Austin PC, Henry DA
CMAJ
[A 3-year study of high-cost users of health care](#)
An infographic summarizing key points of this work can be found [here](#).

THESIS DEFENSES

MSc

Leigh Anne Bakel-Kern (supervisor Pat Parkin)
Examining Agreement and Variability Among National and International Guideline Treatment Recommendations for Asthma and Bronchiolitis

Melanie Penner (Supervisor: Wendy Ungar)
Policy Analysis and Evaluation of National Clinician-Reported Practices for the Diagnosis of Autism Spectrum Disorder

PhD

Heather White (supervisor Richard H. Glazier)
Assessing the Prevalence, Penetration and Performance of Hospital Physicians in Ontario: Implication for the Quality and Efficiency of Inpatient Care



EVENTS

Dean's Leadership Series: Can we Innovate our way to a Sustainable Health System?

February 3, 2016
5:30 pm to 8:00 pm
The Great Hall, Hart House, 7 Hart House Circle

Featuring: Dr. David Naylor, University of Toronto President Emeritus and Chair of the National Advisory Panel on Healthcare Innovation.

A panel discussion, moderated by IHPME Director Steini Brown, will follow.

This event has reached maximum capacity.

When Things Go Wrong: Leading Through Critical Incidents

February 22, 2016
5:00 pm to 7:00 pm
Bridgepoint Active Health
14 St. Matthews Road, Toronto, ON

IHPME, the Society of Graduates (SOG) and the GTA Chapter of the Canadian College of Health Leaders (CCHL) are proud to present *When Things Go Wrong: Leading Through Critical Incidents*.

Featuring four experienced and compelling health care leaders who will share their personal stories and explain how future leaders can respond effectively in challenging times. This event will borrow from the popular TED Talks format to give each leader 10 minutes to present and end with an opportunity for audience participation.

Details available: <http://ihpme.utoronto.ca/events/when-things-go-wrong-leading-through-critical-incidents/>

Introduction to Social Network Analysis Workshop

March 3-4, 2016
155 College Street, Room 412

Instructor: Reza Yousefi Nooraie, MD, PhD, Post-doctoral research fellow, IHPME

Details available: <http://ihpme.utoronto.ca/events/social-network-analysis-workshop/>

Click here for the
DLSPH Bulletin

Health Policy Rounds

Please mark your calendars for our monthly rounds – the first Monday of every month – 12 p.m. to 1:30 p.m.

The next Health Policy Rounds will be held on: March 7th, April 4th, and May 2nd.

Get a Jump on Research Day 2016!

May 4, 2016
155 College Street, Health Sciences Building

IHPME's student-led research event, hosted at Health Sciences Building on May 4, 2016, will showcase IHPME student work or research (from all our programs), with the aim of recognizing excellence in teaching and learning; featuring internationally renowned thinkers and leaders. Additional details will be available in the new year.

Details available: ihpme.utoronto.ca/events/ihpme-research-day-2016/

WE'D LIKE TO HEAR FROM YOU

Our monthly newsletter profiles members of the IHPME community and lists upcoming events.

We're pleased to receive submissions of 400 words or less for consideration in upcoming editions. If you'd like your event listed, please send full details.

Contact: rhonda.cockerill@utoronto.ca and ihpme@utoronto.ca

IHPME
ON
flickr

IHPME
ON
vimeo

To share your IHPME pictures and videos,
email IHPME@utoronto.ca