

IHPME CONNECT 12.2015

FROM STUDENT TO LEADER

IHPME ALUMNI BECOMES MEMBER OF PARLIAMENT

Studying at the institute can open many doors of opportunity. However, when John Oliver studied in the MHS Health Administration program, he never imagined his career path would take him out knocking on as many as 20,000 doors. As he explains, the effort was well worth it.

Selling party memberships door-to-door helped him win the nomination to be the federal Liberal candidate for Oakville. He kept knocking on doors through the following months and into the election campaign. When the votes were counted, he was a Member of Parliament.

"I did things the hard way, but that door-to-door process, while it was new to me and somewhat unrelated to the daily work of serving in government, was a real 'mandating process'. You learn what is important to the people you will be representing and you feel even more rooted in the community," says John.

To enter politics, John left a position as President and CEO of Halton Healthcare Services (comprising Oakville-Trafalgar Memorial Hospital, Milton District Hospital and Georgetown Hospital). It was a decision made all the more difficult because he had been leading the \$2.7 billion creation of a new Oakville Hospital, which will open December 13, 2015.

"I was driven to make this career change because of what I saw as a lack of federal leadership on universal health care – Canada needs a new health accord, and I wanted to offer the knowledge and experience I have gained in how the system is run," says John. "Job creation is another priority for me. I have



two children in their twenties, and I see how they and their friends struggle to start careers, and among my neighbours, I see people in and out of work. I also saw our democratic system moving in a different direction without proper discussion. These were the top reasons for leaving health care administration for politics – something I never thought I would do when I was attending IHPME."

When he entered the institute, John was a chartered accountant who had piqued his interest in the health system after auditing one hospital and consulting for a hospital

association. "I wanted to use the business skills I had learned to serve the public, and I saw hospital administration as a great way to do that," says John. "IHPME provided the perfect balance of health care system knowledge and business principles – hospitals perform a vital role in health care, but they are also a business to be managed."

Given his background in health system, John's thinking on universal care goes a little beyond even his own party's platform, and he hopes to advocate within the House of Commons for ideas that include adding pharmacare to the definition of comprehensive health care. "The world has changed, and you just can't make the assumption that everyone has access to a drug plan." He also believes more can be done at the national level to improve care for people with chronic conditions and that it is time for a Canada-wide approach to mental health.

Although it has been a big career shift, John points out that there is one similarity between health care teams and political organizations. "Team building for a political campaign was different from a hospital in that nearly everyone was a volunteer, but like a hospital, people are brought together by shared values, and driven to work hard because they feel that their work makes a difference. That shared belief is a powerful driver to make change happen."



GREG MARCHILDON INAUGURAL CHAIR EVENT

IN FOCUS: POLICY AND DESIGN

At the beautiful Faculty Club on November 19, Professor [Greg Marchildon](#), the Ontario Research Chair in Health Policy and System Design, discussed health systems financing, funding, and centralization vs. decentralization. Professor Marchildon explained the logic of regional health authorities. In comparing other countries including Canada, the United States, New Zealand, among others, Professor Marchildon provided a summary of three models of regionalization and the natural experiment occurring in Canada. With a focus on Ontario and the creation of the Local Health Integration Networks, options for redesign were considered. The event was a wonderful chance for colleagues in health services research and the public policy arena to connect. Congratulations to Professor Marchildon on his new appointment. We look forward to ongoing collaborations with you in health systems design.

Submitted by: [Vidhi Thakkar](#), MSc, IHPME Doctoral Student, Health Policy.

IHPME IN THE NEWS

IHPME Professor [Ross Baker](#) was featured in the *Toronto Star*, with regards to his recent patient safety study and the Patient Safety Event (hosted by IHPME, in partnership with KPMG) on November 9: *Patient safety in hospitals slow to improve: followup report*.

Read the report [here](#). Read the story [here](#).

IHPME's [Kerry Kuluski](#) and the Health System Performance Research Network (HSPRN) were featured in an article series related to age research being conducted within Lakehead University's Centre for Education and Research on Aging and Health (CERAH): *Patient, family experiences guide health reform*.

IHPME Professor [Audrey Laporte](#) and [Brian Ferguson](#) have released their report in the Canadian Centre for Health Economics (CCHÉ) White Paper Series: *Changing the ways we think about drug prices: insights from economics*. The report is available [here](#).

IHPME Professor [Greg Marchildon](#), the new Ontario Research Chair in Health Policy and System Design for IHPME, recently coauthored an article for the *Toronto Star*: *The time has come for universal pharmacare*. Read the full article [here](#).

PUBLICATIONS

Grudniewicz A, [Bhattacharyya O](#), McKibbin KA and [Straus SE](#). *Implementation Science*.

[Redesigning printed educational materials for primary care physicians: design improvements increase usability](#)

Walters D, Gupta A, Nam AE, Lake J, Martino F, [Coyte P](#).

Healthcare Policy.

[A Cost-Effectiveness of Low Risk Deliveries: A Comparison of Midwives, Family Physicians and Obstetricians](#)

Rebeira M, Grootendorst P, [Coyte P](#).

Journal of Military, Veteran and Family Health. [Determinants of chronic physical health conditions in Canadian Veterans](#)

[Evans J](#), [Baker GR](#), [Berta W](#) and [Barnsley J](#).

Journal of Health Organization and Management Culture and Cognition in Health Systems Change

[Evans J](#), et al.

European Journal of Cancer Care

[A Multi-Method Review of Home-Based Chemotherapy](#)

[Rabeneck L](#), [Sullivan T](#), et al.

Lancet

[Costs, affordability, and feasibility of an essential package of cancer control interventions in low-income and middle-income countries: key messages from Disease Control Priorities, 3rd edition](#)

[Wodchis W](#), [Kwong W](#), [Murray M](#).

Journal of Health Administration Education

[Different Quality Dimensions are Associated with Resident and Family Ratings of Overall Quality in Long-Term Care](#)

AWARDS



Harry Perlstein with Dr. Shawn Mondoux

Congratulations to [Dr.](#)

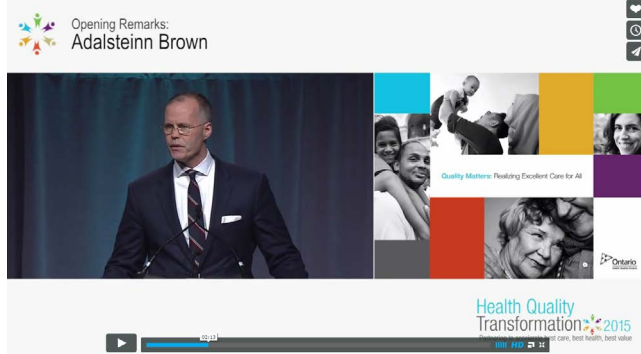
[Shawn Mondoux](#), winner of this year's Harry and Rose Perlstein Graduate Award.

This award recognizes Dr. Mondoux's outstanding paper on hospital quality and safety, *The Emergency Department Visit Summary*. Dr. Mondoux is currently completing his final year of Royal College emergency medicine training at

the University of Ottawa and the Ottawa Hospital. Before this, he completed a bachelor's degree in aerospace engineering at Ryerson University and undergraduate medicine training at the University of Ottawa.



IHPME AT HQT2015



Plenary presentations from HQT2015 are online! Watch videos featuring IHPME Director [Adalsteinn Brown](#), IHPME Associate Professor (and President & CEO of Health Quality Ontario) [Joshua Tepper](#), IHPME Assistant Professor (and VP of Medical Affairs and Health System Solutions, Women's College Hospital) [Danielle Martin](#).

Videos are posted on [IHPME's vimeo account](#).

CALL FOR CHAPTERS

We are pleased to announce the CFP for the forthcoming edited book *Health Professionals' Education in the Age of Clinical Information Systems, Mobile Computing and Social Networks*.

Editors: IHPME Associate Professor [Aviv Shachak](#), PhD; Elizabeth Borycki, PhD, RN; and Shmuel Reis, MD, MHPE.

Proposal submission instructions can be found [here](#). The deadline is February 1st, 2016.

For additional information regarding the publisher, please visit: <http://www.elsevier.com/>

Click here for the
DLSPH Bulletin

FACULTY APPOINTMENTS

Assistant Professor (Status-Only)

[Peter Szatmari](#)

Associate Professor (Status-Only Renewals)

[Joseph Cafazzo](#)

[Eyal Cohen](#)

[Cynthia Jackevicius](#)

Assistant Professor (Status-Only Renewal)

[Bradley Johnston](#)

Associate Professor (Non-budgetary cross renewal)

[Dionne Aleman](#)

Professor (Non-budgetary cross renewal)

[Michael Carter](#)

Adjunct Professor (Renewal)

[Leslie Boehm](#)

FACULTY NEWS

It is with great pleasure to announce that [Tina Smith](#) has recently been appointed as Associate Professor, Teaching Stream for her MSc program. Congratulations, Tina!

THESIS DEFENSES

MSc

[Idan Roifman](#) (supervisor Jack Tu). *Non-invasive Cardiac Diagnostic Tests in Ontario: Temporal Trends in Utilization and Association With Obstructive Coronary Artery Disease*.

PhD

[Glen Hazlewood](#) (supervisor Claire Bombardier). *A Novel Approach to Integrating Best Evidence and Patient Preferences into Treatment Recommendations in Early Rheumatoid Arthritis*.

...continued on next page

PhD

Tyrone Perreira (supervisor Whitney Berta). *Insights Into Nurses' Work: Exploring Relationships Among Work Attitudes and Work-related Behaviours.*

EVENTS

IHPME Health Policy Rounds

December 7, 2015

12:00 pm to 1:30 pm

155 College Street, Health Sciences Building, Rm 460

Home and Community Care— Past as Prologue?

Presented by: Dr. A. Paul Williams

IHPME-GSU Scholarly Activity

December 9, 2015

12:00 pm to 1:00 pm

155 College Street, Health Sciences Building, Rm 100

Interested in learning more about quality improvement and quality based procedures? Want to meet a strategic leader within the Ministry of Health & Long-term Care?

Come to the IHPME GSU Scholarly Activity with Thomas Custers, Manager, Quality Performance & Evaluation – Policy Innovation Branch

MHSc Prospective Students Webinar

December 9, 2015

5:00 pm to 6:00 pm

IHPME will host an online information webcast for individuals interested in the MHSc Health Administration Program. As Canada's foremost training centre for future health leaders, IHPME can help get you to the top of your profession. The MHSc program provides a strategic and comprehensive education in management, business and policy – with an exclusive focus on the healthcare sector.

It is an unparalleled opportunity to learn from internationally renowned faculty, top healthcare executives, and leading health service researchers. And, you can complete this two-year program without interrupting your career.

Webinar login details available at ihpme.utoronto.ca/events/mhsc-prospective-students-webinar/

See the online flyer for details: sites.utoronto.ca/hpme/ead-mhsc-15/

Get a Jump on Research Day 2016!

May 4, 2016

155 College Street, Health Sciences Building

IHPME's student-led research event, hosted at Health Sciences Building on May 4, 2016, will showcase IHPME student work or research (from all our programs), with the aim of recognizing excellence in teaching and learning; featuring internationally renowned thinkers and leaders. Additional details will be available in the new year.

Details available: ihpme.utoronto.ca/events/ihpme-research-day-2016/



To share your IHPME pictures and videos, email IHPME@utoronto.ca

WE'D LIKE TO HEAR FROM YOU

Our monthly newsletter profiles members of the IHPME community and lists upcoming events.

We're pleased to receive submissions of 400 words or less for consideration in upcoming editions. If you'd like your event listed, please send full details.

Contact: rhonda.cockerill@utoronto.ca and ihpme@utoronto.ca